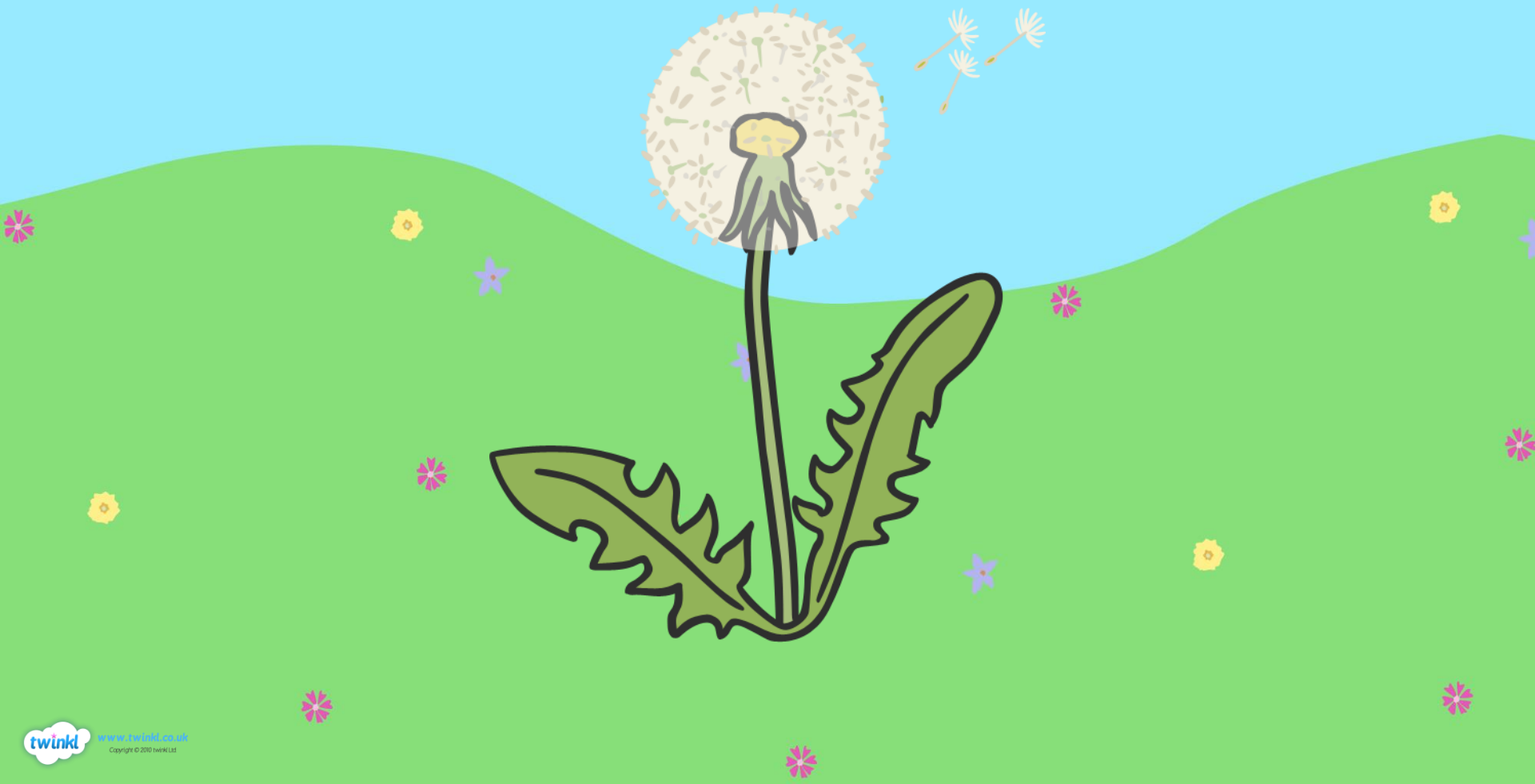


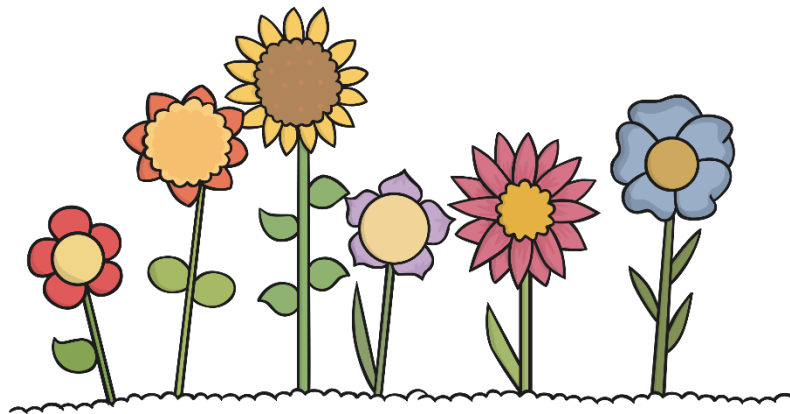
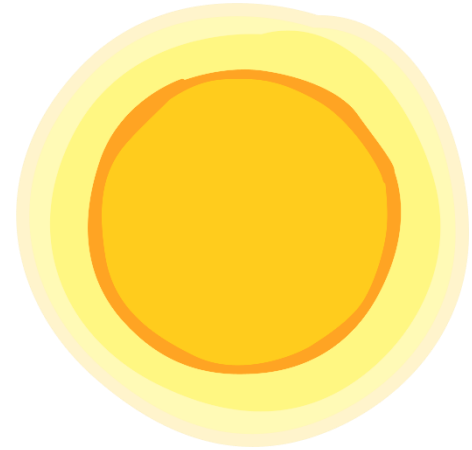
What Plants Need to Grow



What a Plant Needs



air
light
water
nutrients
warmth



Why Does It Need Them?



If a seed is not **warm** enough, it will not germinate.



Germination is when the seed starts to sprout in to a plant.



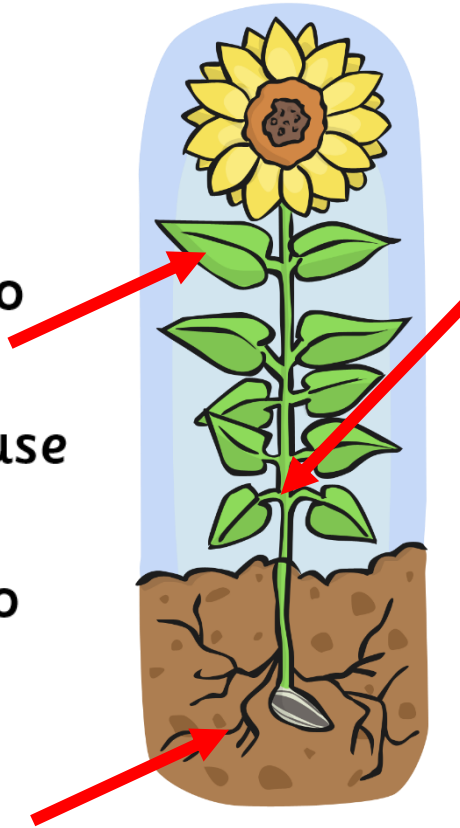
If a plant does not have enough **light**, it will grow to be tall and flimsy as it searches for light. It will probably die.



If a plant is not **watered** enough, its stem will be fragile and have very dry leaves. It will eventually die.

What Parts of a Plant Do

The **leaves** use a process called **photosynthesis** to produce food for the plant. They use **light, water and carbon dioxide** to do this.



The **stem** transports water and nutrients to all parts of the plant.

The **roots** take up water and nutrients from the soil. They also keep the plant in the ground.