

# Parts of a Plant



# Parts of a Plant

Plants have different parts to them,  
just like you do.

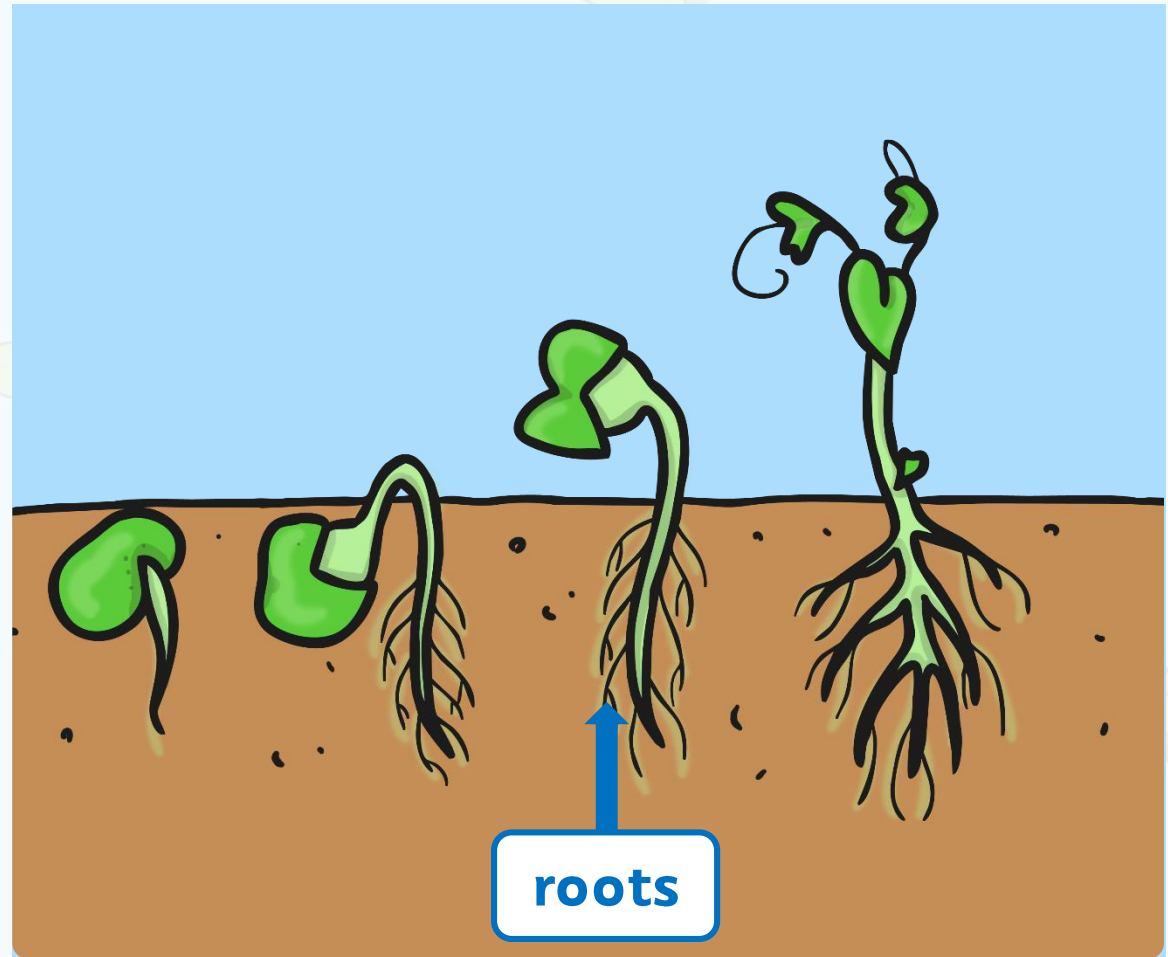
We have different body parts  
such as arms, legs and a mouth.

A plant has different parts too,  
and each part does a different job.

# Roots

The roots of a plant anchor the plant in the ground. Without roots a plant would fall over. Roots also take in nutrients and water from the soil.

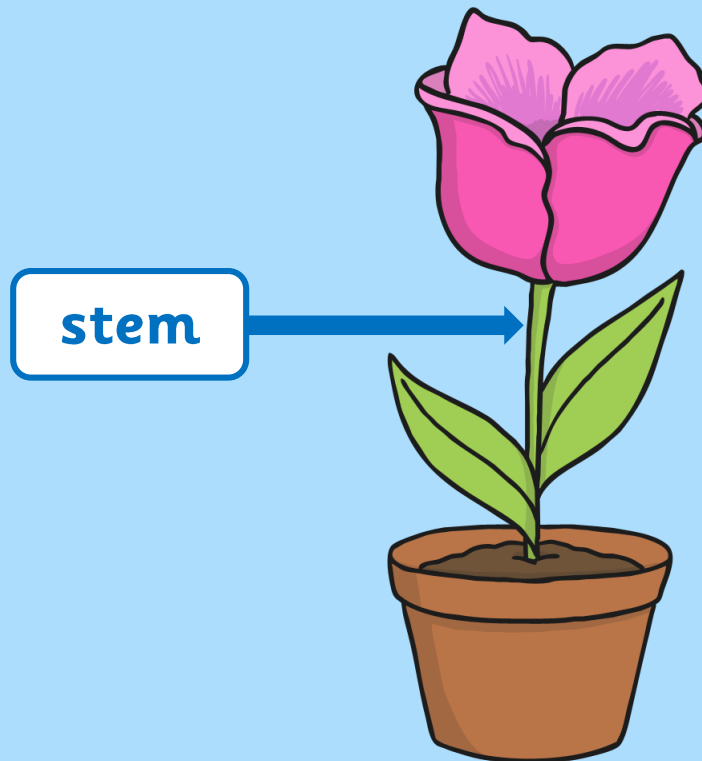
**Can you see where the roots are on this plant?**



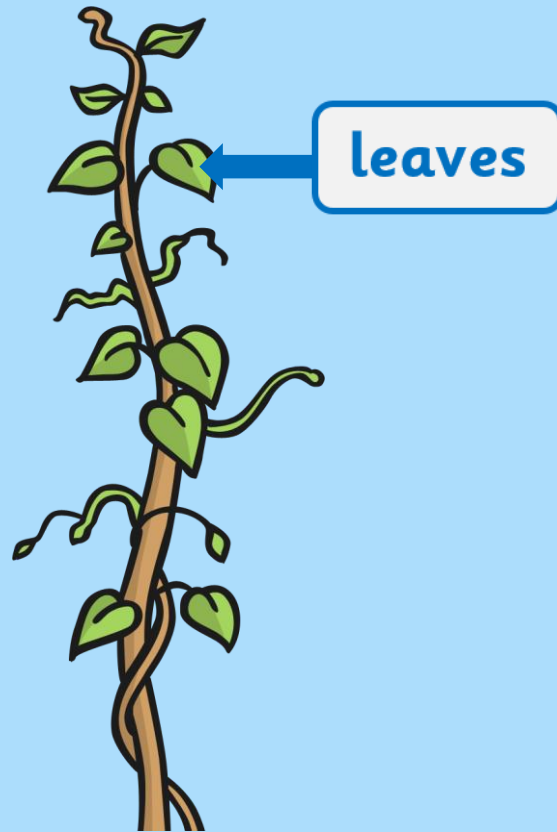
# Stem

The **stem** helps to keep the plant upright. It carries water and food up from the roots.

**Can you see where the stem is on this flower?**



# Leaves



Leaves are very important as they make food for the plants.

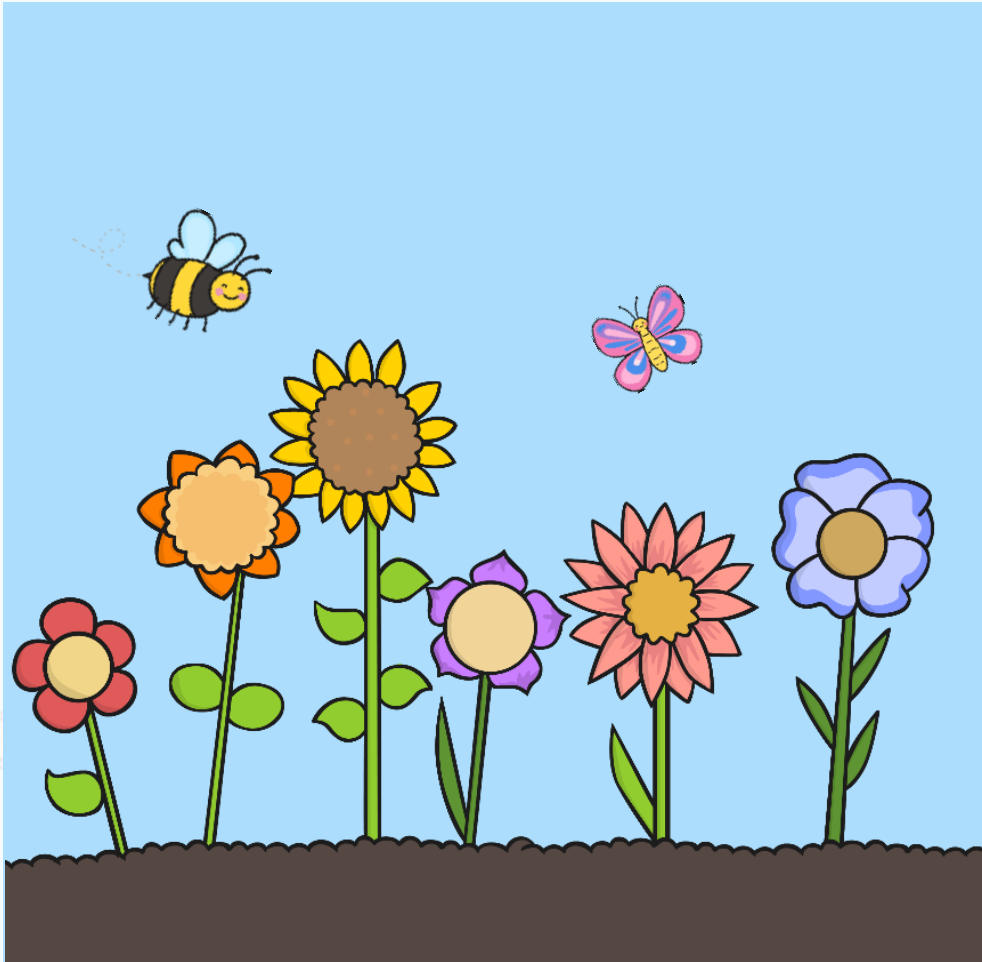
Leaves are made to catch the sunlight because plants need sunlight to make food.

Leaves come in all sizes and shapes.

Leaves come in lots of different colours.

**Can you see where the leaves are on this beanstalk?**

# Flowers



Flowers look pretty and come in lots of different colours. They can also smell lovely.

These colours and smells are important because they attract bees, birds and butterflies.

The bees, birds and butterflies help the plant to produce seeds or fruit.



twinkl

