

Year 2 Discovery

w.c. 15.06.2020



YOU

ARE UNIQUE
ARE SMART
ARE TALENTED
ARE WORTH IT
ARE SPECIAL
ARE VALUED
ARE AMAZING
ARE LOVED

MATTER!



Hot and Cold



Click on the lesson you
would like to complete
today

Please write all answers in your
distance learning book and email
you teacher. We would love to see
all of you're amazing work!

2b@chipstead.croydon.sch.uk

2f@chipstead.croydon.sch.uk

2m@chipstead.croydon.sch.uk

Monday

Tuesday

Wednesday

Thursday

Friday

Please complete the allocated lesson
each day.

Monday

Science

Plants



OK
MONDAY,
LET'S DO
THIS!!!



Plants: Wild Plants

Here are some common plants that people grow in the wild.

Do you know what any of them are called?



daisy



buttercup



dandelion



clover



nettle



bramble



dog rose



ivy

Photos courtesy of PMillera4, Drriss & Marriionnm, MSVG, randihausken, nomanson, Derek.P., bass_nroll (@flickr.com) - granted under creative commons licence – attribution

Plants: Garden Plants

Here are some common plants that people grow in gardens.

Do you know what any of them are called?



grass



iris



lily



poppy



rose



sunflower



sweetpea



fuschia

Plants: Trees

Trees are a kind of plant.
Here are some common trees.



oak



holly



hawthorn



birch



rowan



beech



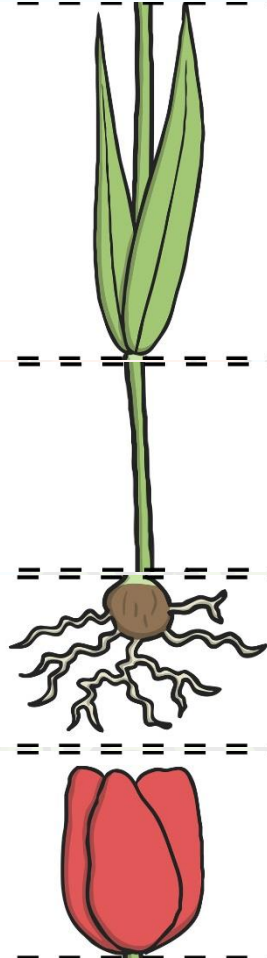
sycamore



lime

Photos courtesy of Franco Folini, Smabs Sputzer, aaron_eos_photography, saaby, richardcjones, danna (curious tangles), amandabhslater, free photos for you (@flickr.com) - granted under creative commons licence – attribution

Parts of a Flowering Plant



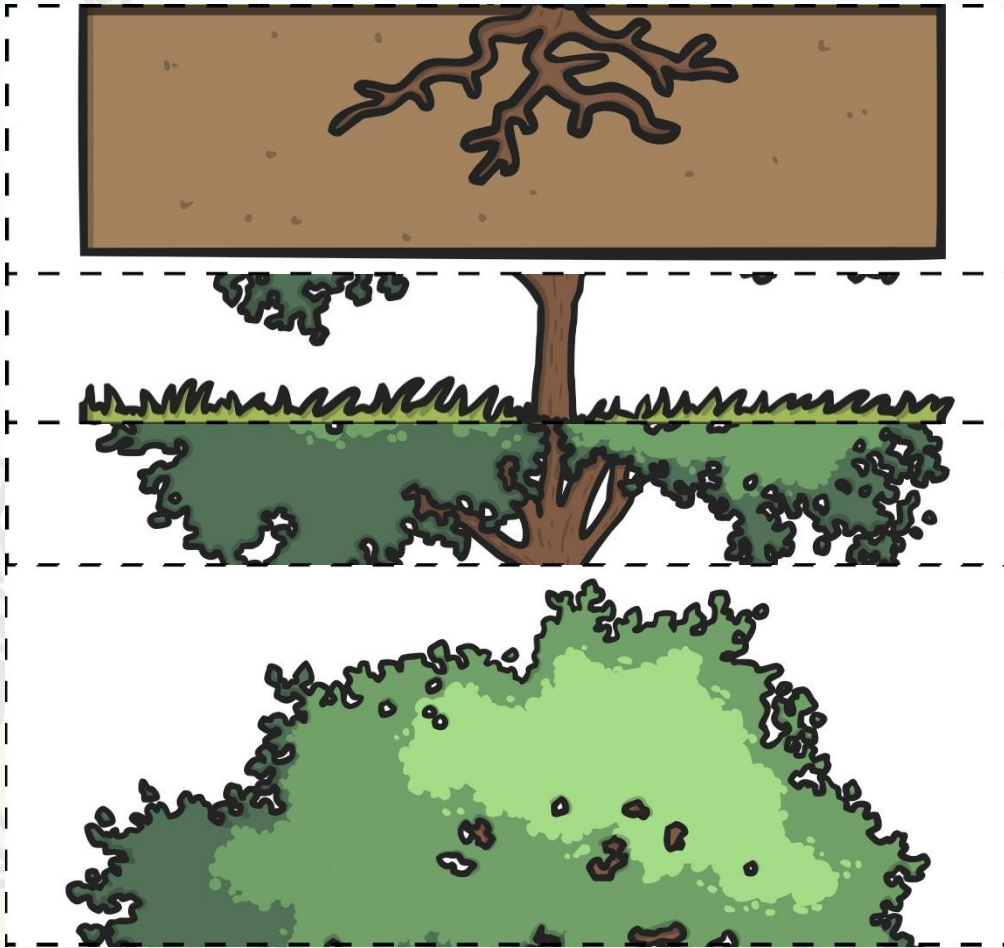
leaves

flower

stem

roots

Parts of a Tree



leaves

trunk

branches

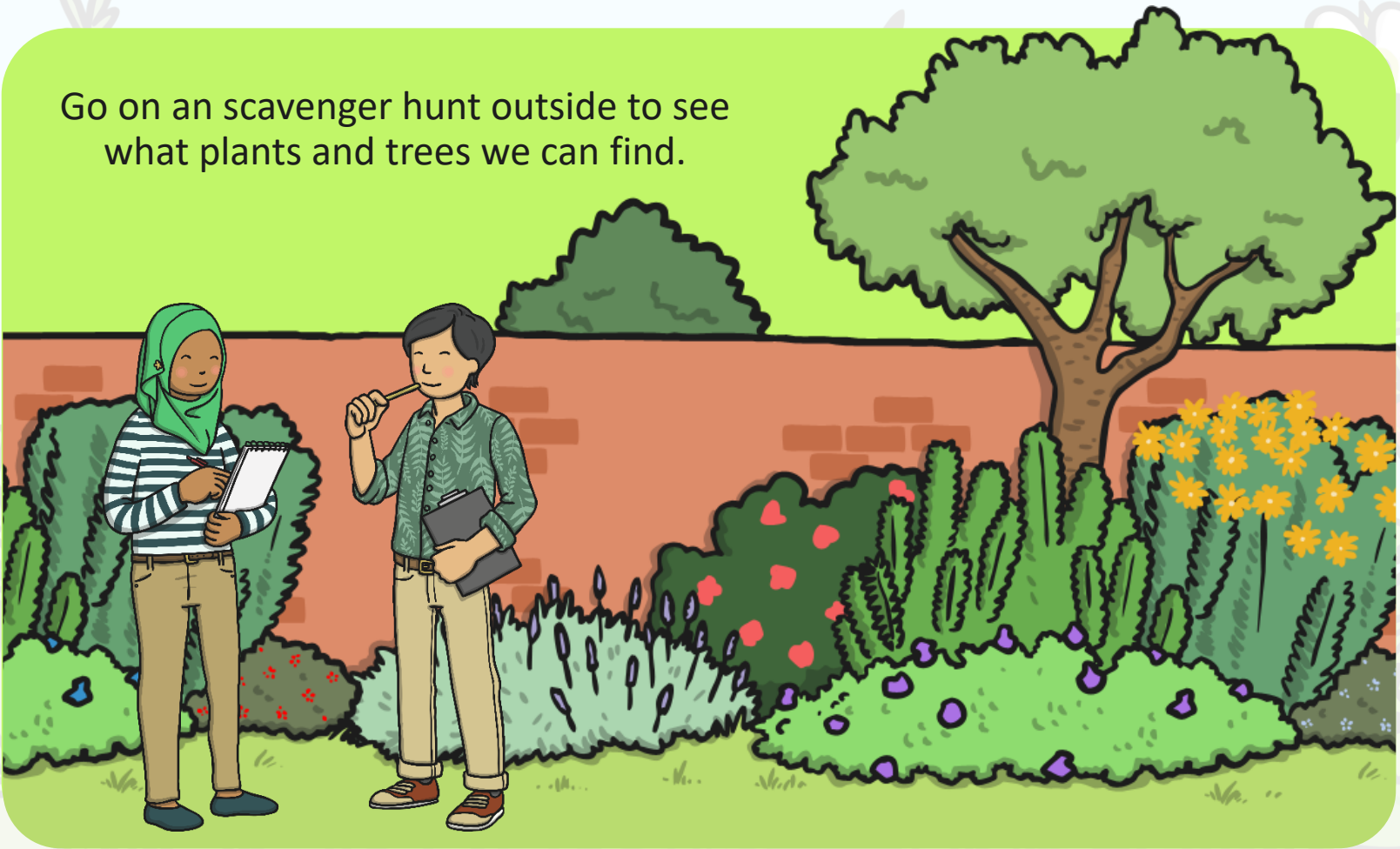
roots

Parts of a plant

<https://www.bbc.co.uk/bitesize/articles/zrh8wtty>

Observing Plants

Go on an scavenger hunt outside to see what plants and trees we can find.



Observing Plants

Tree Observation



Tree Diagram: Draw a picture of an interesting tree. Label the main parts.

Leaf Observational Drawing: Find a leaf from the tree you have drawn. Look at it carefully with a magnifying glass and draw what you see.

Measurements:

Measure the length of the leaf with a ruler: _____ cm

Measure the width of the leaf with a ruler: _____ cm

Measure around your tree with a tape measure: _____ cm

Estimate the height of the tree: _____ m

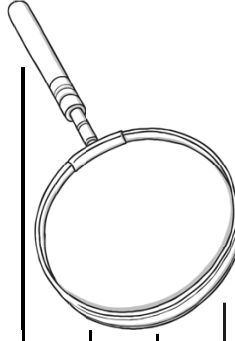
Observing Plants

Flowering Plant Observation

Choose an interesting flowering plant. Look at it closely.

Draw the plant and label the different parts.

Write a description of the plant.



Tuesday

Science

Seeds



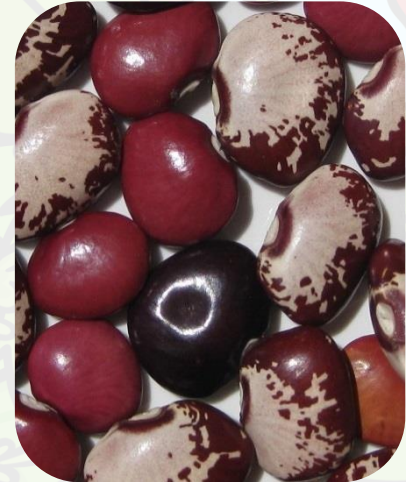
**Good Morning
Heres To A Great
Tuesday
And A
Very
Fun
Day**



Via LoveThisPic.com

Seeds and Bulbs

The first stage in the life cycle of most plants is a seed.
Seeds come in all shapes and sizes. Every plant has a different seed.



Photos courtesy of Xerones, WordRidden, tonrulkens, Peter Kaminski, LifeSupercharger, Leonard John Matthews, Ctd 2005, tonrulkens (@flickr.com) - granted under creative commons licence - attribution

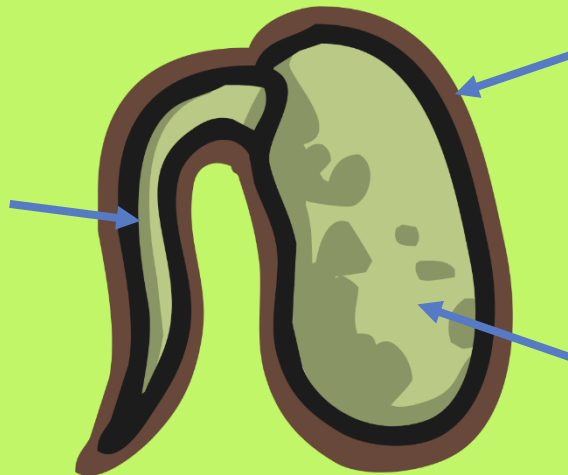
Seeds and Bulbs

Every single seed has the beginnings of a new plant inside it, along with a little store of food to help it grow.

When the conditions are right, the seed soaks up water and swells, and the tiny new plant bursts out of its shell. This is called **germination**.

Embryo:

The tiny root and shoot which will grow into the adult plant.



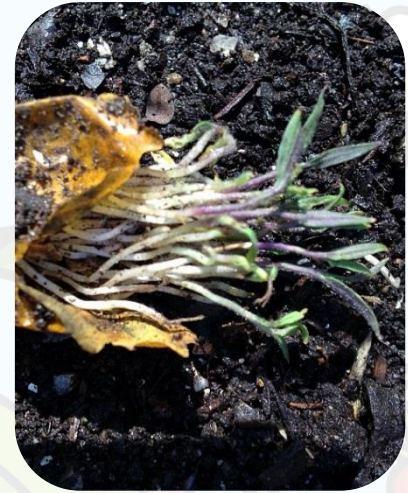
Seed Coat:

A tough outer covering.

Food Store:

A Store of food for the young plant to use until it has grown enough to make its own food.

Seeds and Bulbs: Germination



Click the button
below to find out
more about
germination.



Photos courtesy of Maria Keays, gadl, IITA Image Library, Kristine Paulus, Royal Tasmanian Botanical Gardens, solylunafamilia, thienzieyung, tjmwatson (@flickr.com) - granted under creative commons licence – attribution

Seeds and Bulbs

Some plants grow first from a seed, and then develop a bulb that helps them to grow back year after year.

A bulb lets the plant rest underground over the winter when it is too cold, then grow back later in the year when conditions are right.

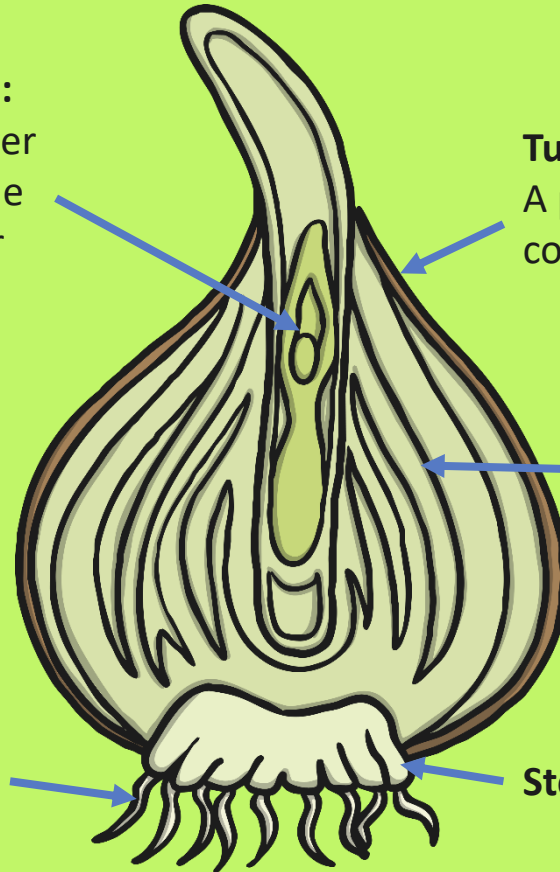
Flower Bud:
Future flower stored inside the bulb for protection.

Tunic:
A papery outer covering.

Scales:
Thick leaves that store the food.

Roots

Stem



Seeds and Bulbs

Here are some common plants that grow from bulbs.

Daffodils, tulips, snowdrops, lilies and allium.



Photos courtesy of BluebearsLair, John-Morgan, ecstaticist, F. D. Richards, corsi photo (@flickr.com) - granted under creative commons licence – attribution

Seeds and Bulbs

We are going to plant a seed and a bulb each, so we can **compare** how they grow.

Comparing means looking closely to see what is similar and what is different.

Choose a seed, ideally bean seeds, to grow with kids because they are large enough to handle easily and they grow quickly.

You will need 4 for this investigation.



What Do Plants Need to Grow?

Seeds and bulbs need to wait for **conditions** to be just right before seeds can **germinate** and bulbs can **sprout** new growth.

What do you think that our plants will need so they can sprout and grow well?

Write down some of your ideas in your book before we start our investigation.

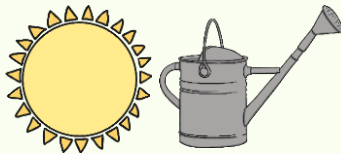


I think that the seed

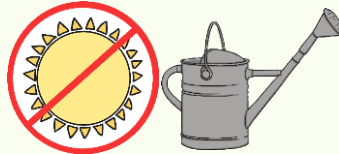
Plant Growth Investigation

You are going to compare the growth of some seeds.

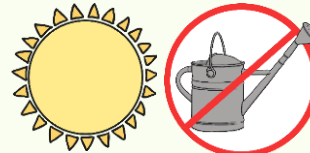
One seed will
be given
water and
sunlight.



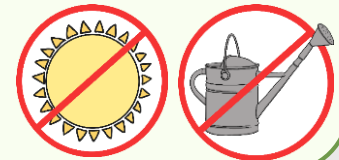
One seed will
be given
water but **no**
sunlight.



One seed will
be given
sunlight and
no water.



One seed will
be given **no**
sunlight and
no water.



Do not begin this
experiment yet! We
will complete our
investigation next
week.

What do you think will happen to each
of the seeds?

Write down your predictions.



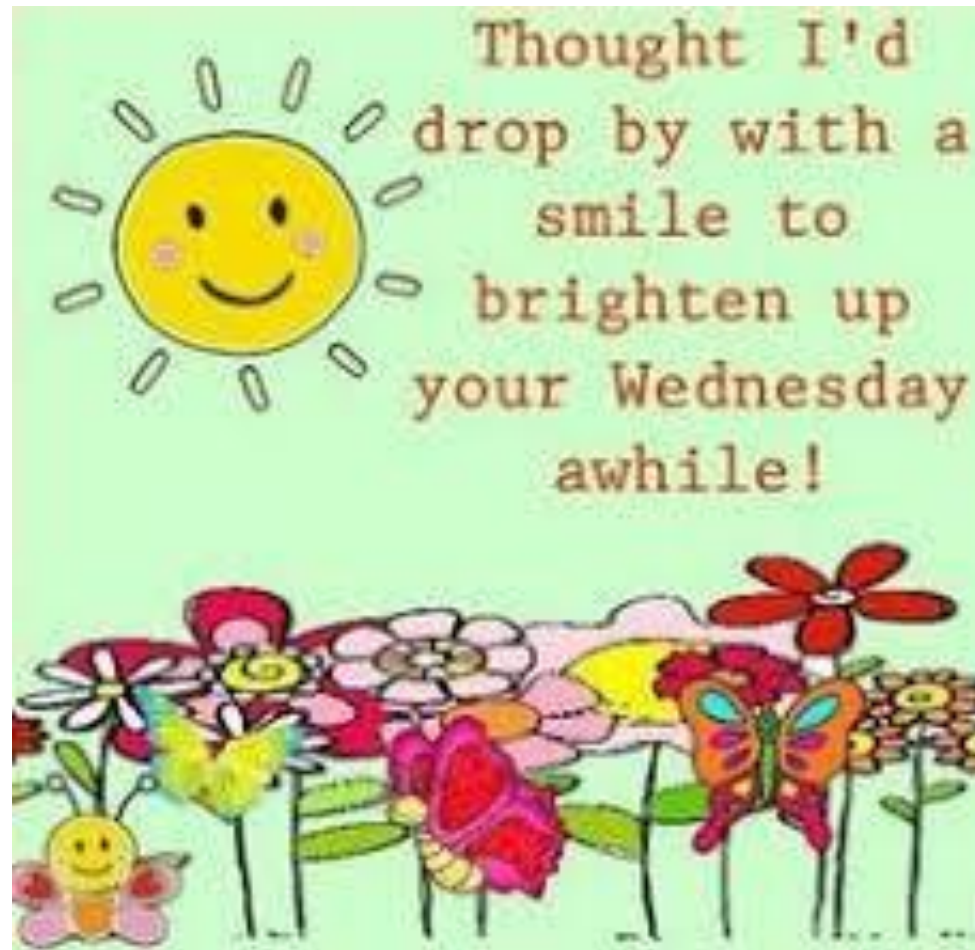


Wednesday

RE

Judaism





Why did Moses lead the Israelites out of Egypt?

Use the link to Oak Academy to continue our unit on Judaism.

<https://www.thenational.academy/year-2/foundation/why-did-moses-lead-the-israelites-out-of-egypt-year-2-wk5-4>

Why did Moses lead the Israelites out of Egypt?



Lesson 2

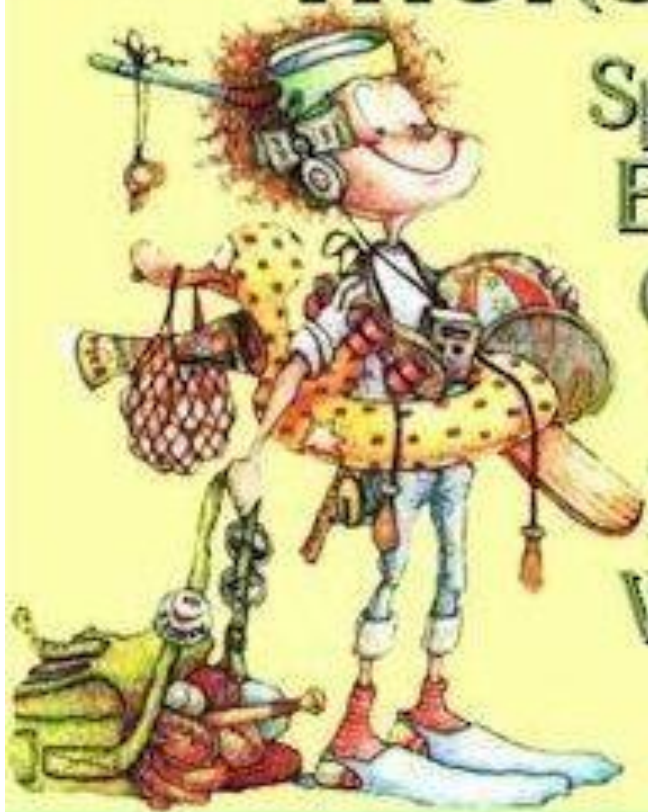
Start lesson





PSHE Thursday

GOOD MORNING THURSDAY



Spreading some
Early Morning
Cheerfulness
To get your
Day started.
Wishing you a
Lovely day

My Cherry Cart



What is fair?

We would like you to watch the following video by clicking on the heart and then write down what you think would be the fair or right thing to do in the following situations.

In the playground someone pushed me over. I don't know if it was an accident or not, but I'm really hurt.

What should I do?

I saw someone being unkind to someone else at break time. I think it's because the person wears glasses.

What should I do?

Someone has told the teacher that Jigsaw Jo broke a pencil on purpose. I know it wasn't her because I saw Jack do it.

What should I do?

My best friend is usually really kind to me, but they are stopping me from playing with other children.

What should I do?

I've just arrived at a new school and I'm really worried I won't make any friends.

What should I do?

It's Friday!



We made it!

Friday Computing

<https://www.bbc.co.uk/bitesize/topics/z3tbwmn/articles/zqnc4wx>



Play a game

Help Crash and Boot program their robot to deliver a parcel.

Do you have any robots around your house?

What robots have you seen?

Scratch

Have you been able to create any projects in scratch? Maybe you could use this website to help you. It gives you step by step instruction on how to create projects.

<https://projects.raspberrypi.org/en/codeclub/scratch-module-1>

You will need two tabs, one for the instructions and scratch on the other. If you have forgotten how to use scratch, have a look at the instructions uploaded in the Distance Learning folder to help you.



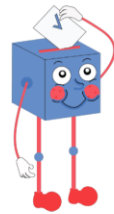
Be informed.



Be curious.



Be heard.



©VotesForSchools2020

Votes for schools

Click on the link in our school website to access Votes for schools.

Continue to learn more about the world, important events and influential people.

Keep making us proud with all of your
incredible work!

