

'Topic at a Glance'

Medium Term Planning Spring 1: 08.01.23 – 09.02.23

Space and the Planets

Encompassing Personal Social Emotional Development, Communication and Language, Physical Development, Literacy, Numeracy, Understanding of the World, Expressive Art and Design

Aliens, Spaceships, planets, sun/moon, stars, rockets, countdown, light table, '5 little men', aliens, paper plate spaceships, galaxy messy play, experiment with weight, space explorer with photo, shiny/silver materials.

Focus activities: Junk modelling space craft / jet packs / flying saucers & visit Digi Verse visit to explore Mars in 3D

Up, Up And Away!

Travel & Transport

Encompassing Personal Social Emotional Development, Communication and Language, Physical Development, Literacy, Numeracy, Understanding of the World, Expressive Art and Design

Air, land and sky, how we travel to nursery, constructing vehicles, printing with tyres and vehicles, obstacle courses. Road safety, green cross code

Focus activities: Traffic survey on CVR / car distance measuring using rulers and ramps

Phonics:

Using our name cards, start to identify initial sound in our name and learning to write our names.

FFT Phonics. 'Sound of the week' each week as follow:

15/1 - s 22/1 - a 29/1 - t 5/2 - p

For more info visit: <https://parents.fft.org.uk/>

Key Dates:

Chinese New Year (10 Feb)

Shrove Tuesday - Pancake Day (13 Feb)

St Valentine's Day (14 Feb)

St David's Day (1 Mar)

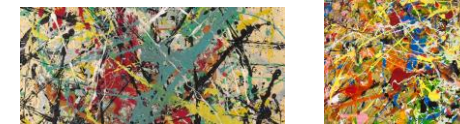
Birds and Winter Animals

Encompassing Personal Social Emotional Development, Communication and Language, Physical Development, Literacy, Numeracy, Understanding of the World, Expressive Art and Design

Bird migration to warmer climate. Animals that hibernate. Habitats, Arctic and Antarctic animals. Igloos. Nocturnal animals, habitats, den/cave building.

Focus activities: Making a winter bird feeder and participating in the RSPB Big Birdwatch

Artist of the Month: Jackson Pollock Art Input: 'Action' Painting



Key Texts this term:

